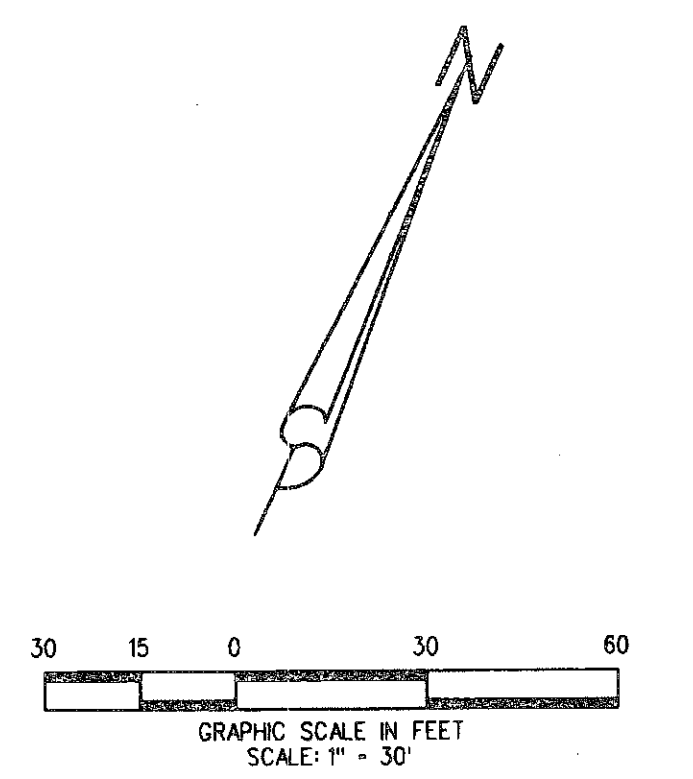
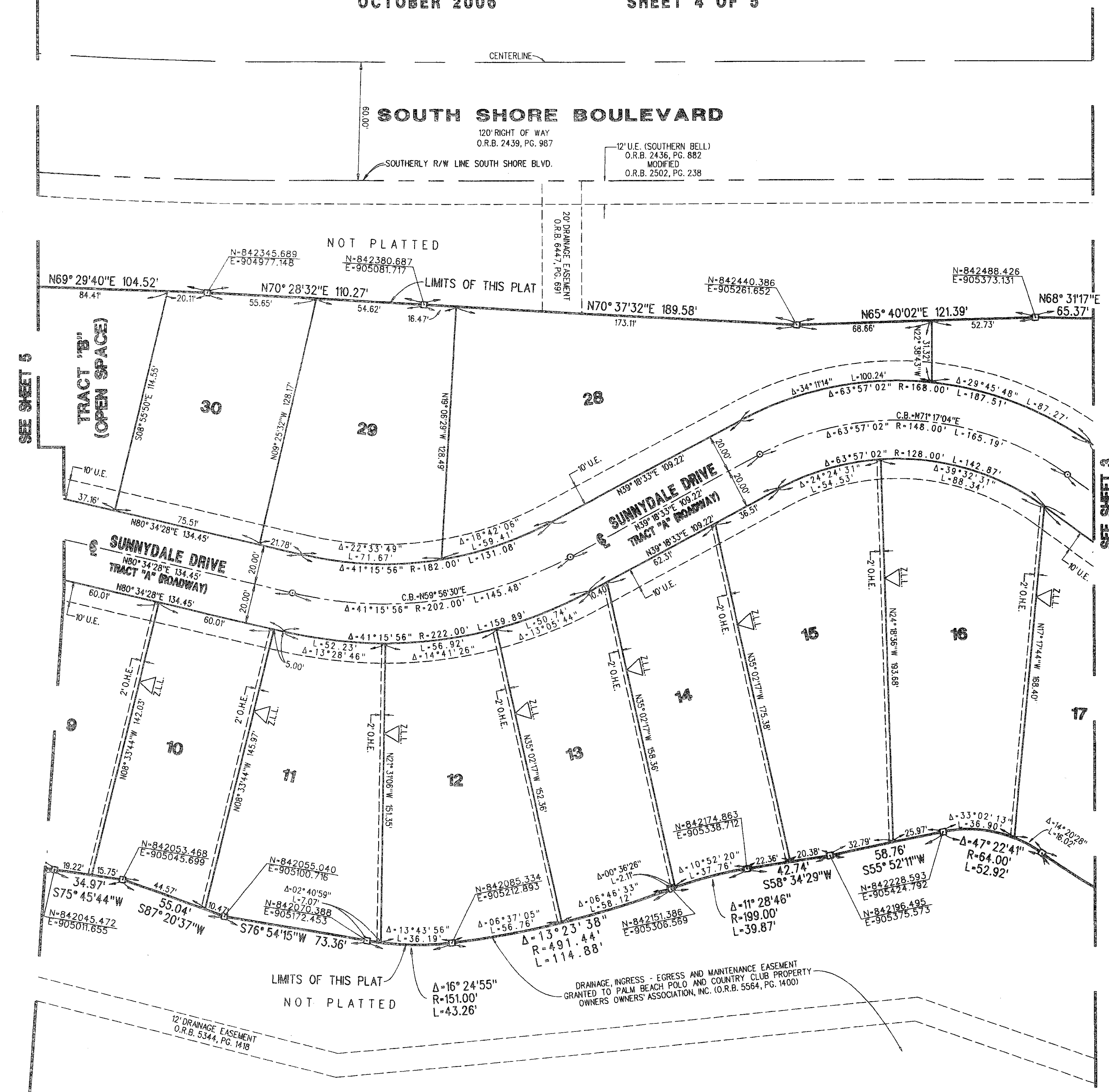


HUNTER'S CHASE OF PALM BEACH POLO AND COUNTRY CLUB SECTION 3, WELLINGTON P.U.D.

BEING A PORTION OF SECTIONS 14 AND 15, TOWNSHIP 44 SOUTH, RANGE 41 EAST,
VILLAGE OF WELLINGTON, PALM BEACH COUNTY, FLORIDA

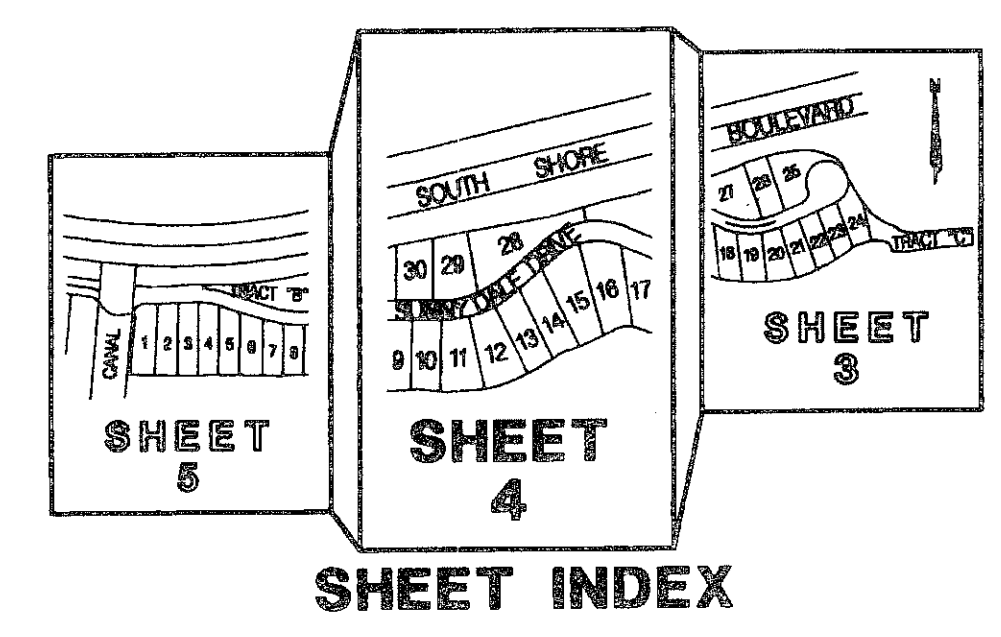
OCTOBER 2006 SHEET 4 OF 5

64



- LEGEND / ABBREVIATIONS:**
- C = CENTERLINE
 - C.B. = CHORD BEARING
 - (GRID) = GRID DISTANCE OR BEARING
 - (PLAT) = PLAT BEARING
 - Δ = CURVE'S DELTA ANGLE
 - D.E. = DRAINAGE EASEMENT
 - L = CURVE'S ARC LENGTH
 - O.H.E. = ROOF OVERHANG EASEMENT
 - O.R.B. = OFFICIAL RECORD BOOK
 - P.B. = PLAT BOOK
 - P.O.B. = POINT OF BEGINNING
 - P.O.C. = POINT OF COMMENCEMENT
 - PG. = PAGE
 - PGS. = PAGES
 - R = CURVE'S RADIUS
 - R/W = RIGHT OF WAY
 - U.E. = UTILITY EASEMENT

= DENOTES ZERO LOT LINE



LIDBERG LAND SURVEYING, INC.
675 West Indiantown Road, Suite 200,
Jupiter, Florida 33458 TEL. 561-746-8454

CAD. K:\UST \ 154441 \ 06-045-306 \ 06-045-306.DGN			
REF.			
FLD.	FB.	PG.	JOB 06-045-306
OFF. CASASUS			DATE APRIL 2006
CKD. D.C.L.	SHEET 4	OF 5	DWG. D06-045P